



**Harrison
REMC**

Your Touchstone Energy® Cooperative 

1165 OLD FOREST ROAD
P.O. BOX 517
CORYDON, IN 47112

www.harrisonremc.com

PHONE NUMBERS & HOURS

Local812-738-4115
Local812-951-2323
Fax812-738-2378
Submit Meter Readings812-951-2023
E-mail contact:.....www.harrisonremc.com
 and go to Ask a Question on the home page.
Websitewww.harrisonremc.com
Hours 7:30 a.m.-4:30 p.m.
 Monday-Friday

SERVICE INTERRUPTIONS

To report service interruptions, call:
 812-738-4115 or 812-951-2323 day or night.
 During regular business hours these phone numbers will connect members to personnel at the Corydon office. After hours, they will connect members to the REMC answering service. Members should restrict calls to the answering service to electrical outages or emergencies.

BOARD OF DIRECTORS

Pat Book, Palmyra, President
 Brian Koetter, Borden, Vice President
 James Smith, Corydon, Secretary/Treasurer
 David Walther, Lanesville
 Darin Duncan, Elizabeth
 C. Todd Uhl, Corydon
 Larry Breeden, Mauckport
 Roy Zimmerman, Laconia
 David Poe, Floyd Knobs

SERVICES WE OFFER

- Long distance phone service
- Personal medical alert system
- Security lights
- Rebate program
- Surge protection
- New home energy seminars
- Discount theme park tickets
- Home Security

Harrison REMC offers CFL recycling

Please put old bulbs in a plastic bag and bring them to our office. We will see that they get disposed of properly.



CO-opNews Information from your electric cooperative

Energy management program helps REMC beat the peak

An energy management program offered by Harrison REMC puts technology to work to save energy during peak times. At the heart of the program is a switch installed at your home that allows us to remotely operate both your electric water heater and/or heat pump/air conditioner (in the summer) during those times of day when the demand for power is greatest and when it is most expensive for the REMC.

When a member enrolls, REMC will send a certified technician to the home to install a switch. There's no cost to the homeowner for the device or for its installation. Once the device is installed, Harrison REMC's power supplier, Hoosier Energy, will be able to send a signal that instructs the device to control your water heater and/or air conditioning. The energy management switch normally operates for only a few hours (up to four hours) on a limited number of the hottest and coldest days of the year in June, July, August, December, January and February. Since water heaters act as storage devices, there should be no loss of hot water. For air conditioning/heat pumps, the outdoor compressor unit is cycled for brief periods while the circulation fan continues to operate.

This is not a program from which members will see instant results. In fact, you will not see any decrease on your electric bill. The energy

management program is designed to help manage peak demand and help the REMC to pay less for electricity during those high priced times. By enabling better management of the system's peak demand, the energy management program will help us avoid purchasing power during those times when it is most expensive.

In addition to serving our members today, we are constantly planning for the power needs of tomorrow. The energy management program will be an important tool in that process. Members who participate in the program will receive bill credits. (see list below).

We encourage all our members to enroll in the energy management program. It's what being a cooperative is all about: members working together to keep costs low and value high for everyone involved. REMC would like to thank the members who have already had the switch installed. June, July and August are peak months, so water heater and air conditioner/heat pump control is possible during the hours of 4-8 p.m. on days that are extremely hot and a possible peak may occur.

To have the switch installed, call one of our customer service representatives at 738-4115 or 952-2323. For more information and a list of frequently asked questions see www.harrisonremc.com. **Together We Save!**

What's in it for you?

Harrison REMC energy management credits

Water heater only (June-August)	\$1.50 month
Water heater only (December-February)	\$2.50 month
Air conditioner only (June-August)	\$4 month
Water heater and air conditioner (June-August)	\$7 month
Water heater and air conditioner (December-February)	\$3 month
Second air conditioner (June-August)	\$2 month

Energy management credits will only be given during the following months: June through August; December through February. There will be little if any controlling during the months of March through May and September through November.

2011 Managers' scholarship winners

The Managers' Association of Indiana's rural electric membership cooperatives announce the presentation of 10 scholarships through the Managers' Association scholarship program.

The \$500 scholarships, funded by Indiana Statewide, are awarded



Pamela Cockerell

annually to students whose families are employed by Indiana electric cooperatives. One of this year's winners is from Harrison REMC. Pamela (PJ) Cockerell, a 2009 graduate of Corydon Central High School is the daughter of Bobby and Dixie Cockerell. Dixie is the REMC's operations coordinator. Pamela attends Indiana University Southeast.

Congratulations to PJ on her accomplishments and future goals!

Important facts about electricity

Electricity seeks the easiest and shortest path to the ground – when people or objects come too close to, or touch an electrical wire, they can become a part of an electrical circuit which can result in an instant flow of electricity through them to ground.

The flow of electricity through the human body can kill – less than one ampere of electricity can burn, severely injure or cause death. Electricity is fast – electricity travels at approximately 299,330 km per second. That leaves no room for mistakes – never put yourself into electricity's path.

“Conductors” conduct electricity readily and in large amounts – all metals, waters, humans and even non-metallic materials (trees, ropes, etc.) can conduct electricity depending on moisture content and surface contamination – caution needs to be applied.

Birds land on wires, so they must be safe to touch.

Birds don't get electrocuted when they land on wires because they don't represent a path to ground. Electricity wants nothing more than to go to ground and will always do so by the easiest most direct route. A bird on a wire doesn't give electricity anywhere to go but back to the wire – easier for the current to stay right where it is in the wire and continue on its way.

Power lines are insulated, so they're safe to touch.

Not so fast. Many overhead power lines are insulated, but most power lines are not insulated. Consider all electrical lines as being dangerous.

As long as my ladder isn't metal, it's safe to rest on the power line.

Electricity wants a conductor. Metal is an

excellent conductor and so metal ladders are a natural hazard around overhead power lines. But so is water. No matter what the ladder is made of, if it's wet or can get wet, it represents a potential hazard – and most ladders contain metal parts as well. Be safe – keep all ladders away from overhead power lines.

As long as my ladder isn't touching the line, I'm safe.

Maybe. Depends on how far away your ladder and you are from the line. Electricity can jump and often does when a potential conductor like a metal ladder comes within a certain proximity. Also, the ladder could slip into the power line. Be safe, and keep well away – at least 10 feet – from overhead power lines.

I'm just trimming my tree limbs to keep them clear of the power lines. I won't be using a ladder so I don't need to worry.

Actually, there's plenty to worry about. Remember, electricity doesn't need metal. The moisture in the tree and in you will do nicely, thank you. Move a limb enough to come into contact with the line, and electricity now has a direct path to ground through the tree, your pruning tool, and you! Better call the utility company, or your local department of transportation if the limbs are over a roadway, for their assistance with the job.

I'm just digging a couple inches into the ground. I really don't need to worry about the lines.

How long ago were those lines laid? How has the ground shifted in that time? Is it possible you might accidentally push your shovel deeper than you intended? Error on the side of caution – make the call.

The lines are marked; my job is near but not on top of the lines. I'm safe to dig away.

The ground maps are approximate and the person doing the marking may not be exact. Once the lines are marked, do any digging that comes within 24 inches of either side of the markers, with care and by hand. Buried lines are insulated, but can be damaged and become dangerous by the blade of a shovel or any sharp object.

What is that mysterious big green metal box behind the hedge on the corner?

It may be electrical equipment installed there by the utility company to help deliver electricity to your home from the high voltage lines near your neighborhood. They should be marked with yellow labels as an electrical hazard and children should be taught to leave them alone.

If the utility company put it there in the middle of a residential neighborhood, it must be safe.

Yes, they are generally safe. However, if the equipment or its casing has been damaged due to vandals, careless landscapers or other causes, a potential hazard may exist. Children should be taught not to enter the equipment or investigate and to tell an adult right away so the utility company can be notified immediately.

I'm afraid to go near it or touch it, particularly with anything metal.

The current-carrying parts of pad-mounted equipment are securely locked inside the cabinet and pose no hazard to the public. Infrequently, however, vandalism or other occurrences may cause the access door to be ajar. In this case, avoid touching any part of the equipment and notify the utility company immediately.

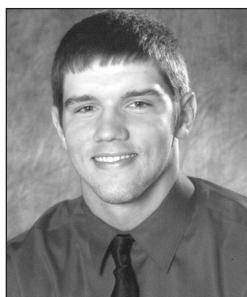
Harrison REMC announces scholarship winners

Each year Harrison REMC awards several \$1,000 scholarships to local students who choose to stay in the area and attend Indiana University Southeast to continue their education.

Scholarships are awarded each spring to graduating seniors who live with a parent or guardian that is an REMC member. Awards are based on academic achievement.

The scholarship winners for 2011 are:

- Tyler Jones, Corydon Central High School, is the son of Daniel and Janice Jones.
- Abigail Schmelz, Lanesville High School, is the daughter of Mike and Melanie Schmelz.
- Victoria Swank, South Central High School, is the daughter of Charles and Alicia Swank.
- Whitney Hitner, North Harrison High School, is the daughter of Mike and Lesa Hitner.
- Travis Scott, Borden High School, is the son of Robert and Dawn Scott.
- William Stumler, a home school student, is the son of Chris and Tracey Stumler.
- Patrick Harbeson, Floyd Central High School, is the son of Roger and Karen Harbeson.
- Alyssa Parr, Crawford County High School, is the daughter of David and Kimberly Parr.



Tyler Jones



Abigail Schmelz



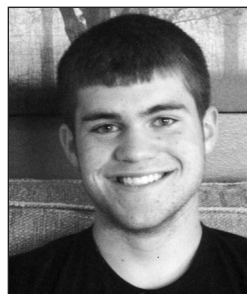
Victoria Swank



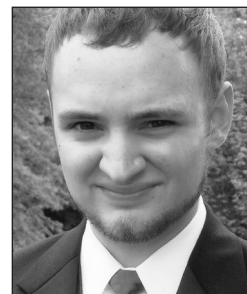
Whitney Hitner



Travis Scott



William Stumler



Patrick Harbeson



Alyssa Parr

Appliance recycling program offers cash incentive, convenient pick up

Harrison REMC is offering an appliance recycling program to consumers ready to ditch their unnecessary and inefficient refrigerators and freezers. They will save some money, make a few dollars and help out the environment all at the same time.

Harrison REMC is offering a \$30 incentive to homeowners who recycle their refrigerators or freezers in this program. Qualifying refrigerators and freezers must be in working condition with an inside measurement of 10 to 30 cubic feet.

To receive the incentive, customers must schedule a time to have their working refrigerator removed. This pick up is free and no purchase is necessary.

In addition to the \$30 incentive, participating consumers are projected save up to \$150 a year in energy costs.

"Having an older refrigerator picked up for recycling is an easy way to make money, reduce monthly expenses and protect the environment," said Bob Geswein, energy services advisor.

The co-op's power supplier, Hoosier Energy, has partnered with JACO Environmental to schedule, collect and recycle the appliances.

To schedule pick up of a refrigerator or freezer for recycling, call 877-395-5535 or visit www.harrisonremc.com to sign up.



Pick up some cold cash.

When we pick up your old fridge.

Get \$30 back when you recycle your old fridge.

Harrison REMC expands member options

Harrison REMC will be expanding our members' methods for contacting us by installing an Interactive Voice Response (IVR) option to our phone system at the end of July. The IVR will allow Harrison REMC to offer more options to our members and will be available 24 hours a day. Some of the benefits of the IVR will be:

- The ability to make payments by phone
- Outage reporting
- Account inquiries (balance information)
- Member information updates (phone numbers)
- Employee directory and the ability to dial by extension

- Customer notification, such as planned outages, delinquencies, etc.
- The IVR also gives Harrison REMC more options to contact members about their accounts. The REMC will have the ability to notify members of upcoming planned outages so arrangements can be made for members if necessary. Because your phone number is so important to the IVR system, it is critical that we have up-to-date phone numbers for your account.

Please take the time to fill out the information below and include it when you send back your bill. This information can also be e-mailed to cracicot@harrisonremc.com.

Up-to-date information will help us help you

Name: _____

Address: _____

City: _____ ZIP code: _____

Account number: _____

E-mail address: _____

Home phone: _____

Work phone(s): _____

Cell phone(s): _____

Return this form with your next bill payment or e-mail the information to cracicot@harrisonremc.com

Geswein receives brand champion award

Touchstone Energy® Cooperatives last week awarded Harrison REMC Energy Advisor Bob Geswein a brand champion award at its annual Connect Conference for Cooperative Marketing, Communication and Member Services Professionals. This honor shines the spotlight on dedicated employees in various job roles who have shown exceptional leadership, effectiveness and consistency while locally or regionally building the brand. These employees exhibit innovation, integrity, accountability and commitment to community while proudly serving their members.

Geswein received the award in recognition of his dedication to get the word out about energy efficiency. Geswein holds monthly home seminars at both Clark County REMC and Harrison REMC. He also travels throughout the state sharing his knowledge. Geswein also appears in videos produced by Touchstone Energy which are on the Together We Save website.

Touchstone Energy's success as the national brand for electric cooperatives is attributed to individuals who truly live the "power of human connections."



Bob Geswein

High Performance Home Seminars

Presented by Bob Geswein

At Clark County REMC

Thursday, July 7, 7 p.m.

At Harrison REMC

Wednesday and Thursday,

Aug. 3 and 4, 7 p.m.

Office closed
Harrison REMC will be closed
Monday, July 4,
for Independence Day.

Call 811 or 800-382-5544
before you dig.
Allow time for the utilities
to mark their lines.
Respect the markings
and excavate with care.

REMC RATE SCHEDULE

Residential and Farm Service Rate

EXAMPLE FOR 1,000 KWHS

Basic service charge.....	\$20.00
First 750 kwhs @ .08295/kwh	62.21
Over 750 kwhs @ .06723/kwh.....	16.81
Power cost tracker .016074 per kwh	16.07
SUB-TOTAL.....	\$115.09
Indiana sales tax (7%)	8.06
TOTAL BILL.....	\$123.15

NOTICE

Tracker adjustment revised lower

Notice is hereby given that on June 20, 2011, Harrison Rural Electric Membership Corporation filed before the Indiana Utility Regulatory Commission (IURC) a request for approval of the application of the Wholesale Power Cost Tracking procedures established by the Indiana Utility Regulatory Commission in Cause No. 34614. This request is being made by reason of a change in Hoosier Energy, Inc.'s wholesale rates to its member Rural Electric Membership Corporations (REMC). This change in rates will be passed through to its member systems' retail rates via the wholesale power cost tracking procedure.

This action will result in an increase in the wholesale power cost tracker included in the rates charged by Harrison REMC and will affect the consumers of Harrison REMC receiving service pursuant to the schedule of tariffs set forth in Appendix A on file at the IURC. The increase is expected to be \$0.000378 per kWh (38 cents per 1,000 kWh).

This filing is expected to be approved by the IURC by July 20, 2011. If approved, the change would take effect for bills to be rendered beginning with the August 2011 billing cycles.

Any objections to this filing should be in written form and directed to either the Indiana Utility Regulatory Commission (IURC), ATTN: Brenda Howe, 101 W. Washington St., Suite 1500E, Indianapolis, IN 46204 or the Indiana Office of Utility Consumer Counselor, National City Center, 115 W. Washington St., Suite 1500 S, Indianapolis, IN 46204.

Notice of capital credit allocation

As a nonprofit electric cooperative, Harrison REMC is obligated to allocate, by credits to a capital account, all amounts in excess of operating costs and expenses at the end of each fiscal year. This patronage capital is allocated to each and every member of the cooperative, based on the contribution of patronage (revenue) by each member for that particular year.

To determine your capital allotment, as a member of Harrison REMC, first determine your electric bill amount for the year (your bill amounts, less tax and less miscellaneous charges,) then multiply this amount by the following allocation factor.

In 2010 the allocation factor was .0660422.

Bulb exchange for school supplies

When the school year begins, many children will need basic school supplies.

Harrison REMC recognizes that for some parents it is difficult to provide their children the proper tools for learning.

For the month of July, Harrison REMC members may bring in a school box (like the one pictured



below), filled with glue or glue stick, scissors, crayons, pencils and erasers. Each box must contain all of the items. In exchange Harrison REMC will give our members six standard compact fluorescent light bulbs (CFLs) or four specialty size CFLs.

The boxes will be distributed to community services.

REMC 'affordable' chartered bus trips

Tip of the Buckeye Tour

Wednesday, Aug. 17

7 a.m. - 6 p.m.

\$38

We're off to Cincinnati to Krohn's Conservatory. Enjoy a wide range of plants in six display areas: the Orchid House, the Bonsai House, the Desert House, the Tropical House, and the Palm House. Also see the 20-foot waterfall, stroll the gift shop, and check out the Visitor's Center.

We will lunch along the way to Jungle Jim's International Market. There are six acres of incredible edibles from around the world plus unique gift shops featuring premiere names in the gourmet cookware industry, upscale products by Vera Bradley, Marumca and beads from She Beads or Trollbeads, Fresh Produce sportswear, baby items from Bunnies by the Bay and Babies in Bloom. There's also a stunning plant nursery in case you are so inspired from Krohn's that you just have to get started on a project of your own!

Payment for all trips is due 14 days in advance unless otherwise listed. There are no refunds. A minimum of 30 people are required to take each trip. Our buses are from American Coach Travel. Pick up is at Lincoln Hills Christian Church and across from McDonald's in Georgetown. 812-738-4115/951-2323.

Discount Theme Park Tickets

HOLIDAY WORLD	REMC PRICE	GATE PRICE	DINOSAUR WORLD	REMC PRICE	GATE PRICE
Adult	\$38.00	\$42.95	Adult	\$11.75	\$12.75
Child (Under 54" Tall)	\$31.25	\$32.95	Child (Ages 3-12)	\$8.75	\$9.75
Senior (Age 60+)	\$31.25	\$32.95	Senior (Age 60+)	\$9.75	\$10.75
Adult (2-day admission)	\$60.00	\$64.95	CINCINNATI ZOO		
Child (2-day admission)	\$53.50	\$54.95	Adult	\$13.00	\$14.00
Children 2 and under are FREE			Child (Ages 2-12)	\$9.00	\$10.00
KINGS ISLAND			INDIANA BEACH		
Adult	\$24.00	\$51.99	Over 48"	\$25.00	\$39.95
Child (age 3 and up, under 48")	\$24.00	\$31.99	Under 48"	\$15.00	\$29.95
Senior (age 62 +)	\$24.00	\$31.99	Children 2 and under are FREE		
Children 2 and under are FREE			CREATION MUSEUM		
NEWPORT AQUARIUM			Adult	\$23.00	\$24.95
Adult	\$21.00	\$22.00	Child (Ages 5-12)	\$13.00	\$14.95
Child (Ages 2-12)	\$14.00	\$15.00	Senior (Age 60+)	\$17.00	\$19.95
Children 1 and under are FREE			INDIANAPOLIS ZOO		
LOUISVILLE ZOO			Adult	\$13.50	\$15.25
Adult	\$11.00	\$12.95	Child (Ages 2-12)	\$9.00	\$10.25
Child (Ages 3-11)	\$8.00	\$9.50	Senior (Age 62+)	\$9.00	\$10.25
Senior (Age 60+)	\$8.00	\$9.50			

Stop by the office on Old Forest Road, Corydon, to purchase your tickets today, or call 812-738-4115 or 812-951-2323 for more information.